

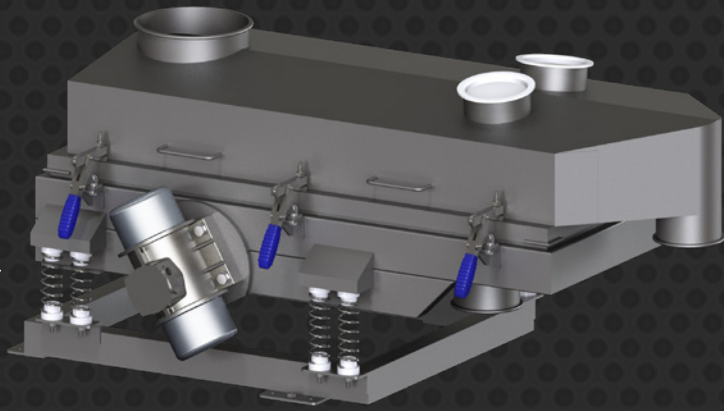
# Segregator Range

## SM 42 & 53

### Linear Vibratory Screener

The Sievmaster Segregator has a large screen area designed to move wet or dry product in a linear motion. It is ideally suited to light fragile products with low bulk densities.

A 'Hygiene' series is also available, developed especially for the food industry and manufactured entirely from stainless steel. These easy clean units can be supplied upon wheels for mobility or feet for static installations. The range is available with variations to provide up to 3 separations, with a wide choice of sieving aids for problem materials. Each unit is made to order to the customers exact process needs.



#### INDUSTRIES



Food & Drink



Pharmaceutical



Chemical



Nutraceutical



Reclamation & Recycling



Additive Manufacturing

#### FEATURES

- Available in 1250 mm long x 650 mm wide and 1550 mm long x 920 mm wide mesh frame sizes
- Easy clean design, no crevices
- Dust & hose proof
- Constructed from FDA compliant materials
- Quick change bonded screens
- Low maintenance/running costs
- Noise level less than 70 dBA in use
- Your product quality maintained
- Sieve and convey in one action
- Full validation packages for food/pharma

#### TYPICAL MATERIALS

- Wet or dry applications
- De-dusting & de-watering
- Liquid separation
- Almost any powder or granulated material
- Biscuits
- Confectionary
- Seeds
- Liquid separation
- Tablets & capsules

#### PRODUCT OPTIONS

##### Machine configurations\*

- ATEX upgrade 
- FDA/EC upgrade 
- Ultrasonic upgrade 
- Mesh debinding - mechanical 
- Jacob or BFM inlet/outlet/oversize 
- Other made to order options available

##### Finishes available

- Mirror polish to internal surfaces
- Other finishes available depending on application requirements

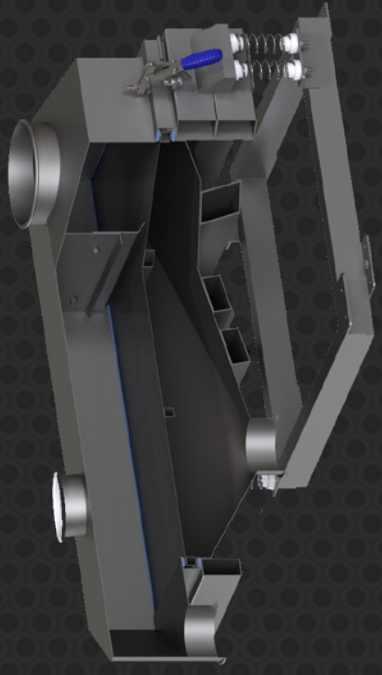
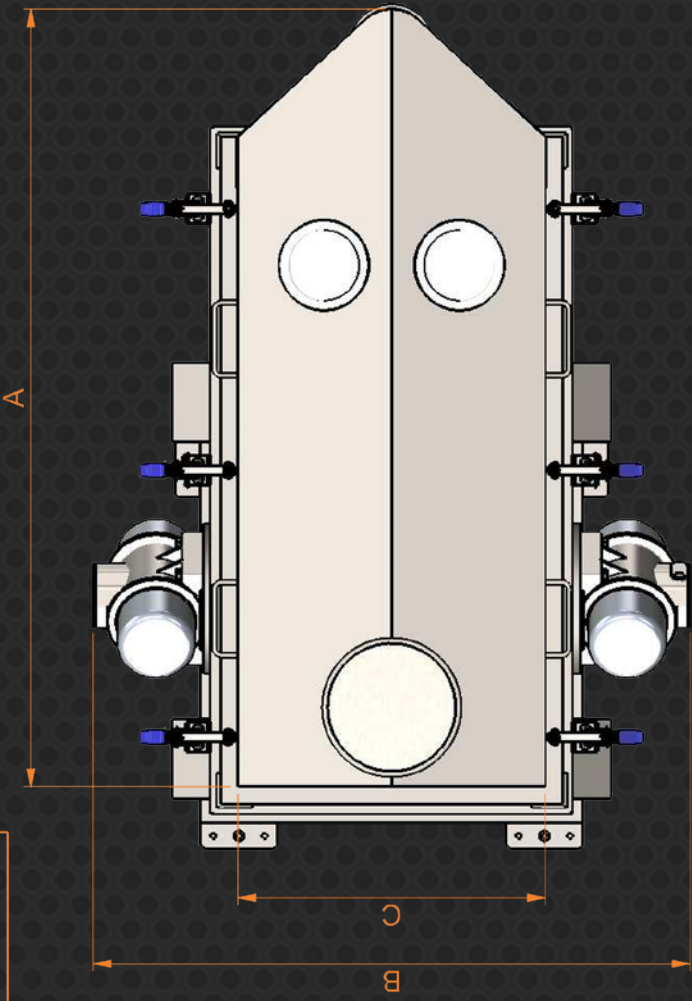
\*More options available on request

#### CERTIFIED TECHNOLOGY





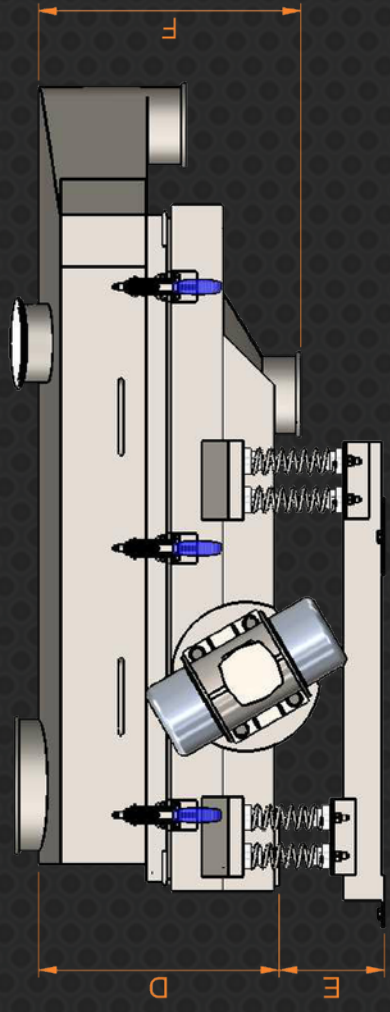
# SM SEGREGATOR 42 & 53



DIMENSION	SM SEG 42 (mm)	SM SEG 53 (mm)
A	1550	1850
B	1160	1490
C	600	900
D	555	555
E	165	165
F	500	500

SCREEN SIZE = 1245 x 645mm & 1540 x 915mm  
 FOR ADDITIONAL DECKS ADD 180mm PER EXTRA SCREEN  
 BESPOKE FRAMES AVAILABLE - MOBILE OR STATIC  
 INLET & OUTLETS CONFIGURED TO SUIT INSTALLATION - TYPICAL VERSION SHOWN

TYPICAL VERSION SHOWN - UNIT CAN BE OPEN OR ENCLOSED



ELECTRICAL	SM SEG 42	SM SEG 53
VOLTAGE	110 / 240 / 380-460	110 / 240 / 380-460
FREQUENCY	50 / 60 hz	50 / 60 hz
POWER	0.55 kw x 2	0.55 kw x 2
PHASE	3	3
ATEX	YES	YES

ALL DIMS. ARE APPROX. NOT TO BE USED FOR FINAL PLANNING. FULL DRAWINGS CAN BE SUPPLIED ON REQUEST. SUBJECT TO CHANGE AT ANY TIME.