

Rota Range

SM R200-Disintegrader

Centrifugal Lump Breaker with Fixed Drive Shaft Supported at Both Ends

The Rota Disintegrader also shares a significant number of its characteristics with the R200-ST. Whereas the R200-ST-LB improves on the deagglomeration capability of the R200-ST, the R200-DIST is a dedicated lump breaker. The inlet is replaced with a large wide-throated hopper, designed to be filled with product whilst the auger is inactive. After the unit has been loaded in "safe mode" the processing of the material will begin with no risk to the operator.



INDUSTRIES



Food & Drink



Pharmaceutical



Chemical



Nutraceutical



Reclamation & Recycling



Additive Manufacturing

FEATURES

- Outlets are designed with standardised flanges but can be supplied with adaptors to suit any connection
- All motors and electrical items are IP55 rated, machine can be washed down without fear of ingress
- All doors and access points are fitted with magnetic interlock switches
- 100L hopper volume with 900mm ergonomic sack tip height and hinged, self-lifting top lid to cover

- Automatic start up on lid closure
- Fines outlet measures 412mm x 600 mm, oversize outlet measures 412mm x 149 mm
- Pneumatic conveying system integration
- Fitted with sack rest table
- Dust tight design, non-vibratory
- Low maintenance/running costs
- Mobile support frame

TYPICAL MATERIALS

- Compacted dried fruits
- Biscuits for cheese cake bases
- Powder compacted by storage or conveying
- Agglomerated powders
- Fudge blocks
- Meringue
- Honeycomb

PRODUCT OPTIONS

Machine configurations*

- Deagglomeration of product (lump breaking)



- ATEX upgrade



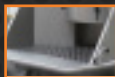
- Wedgewire mesh basket



- Bonded mesh basket



- Sacktip type infeed



- Fines transition piece



- Oversize transition piece



- Oversize collection barrel



- Fill level alarm



- Oversize outlet control



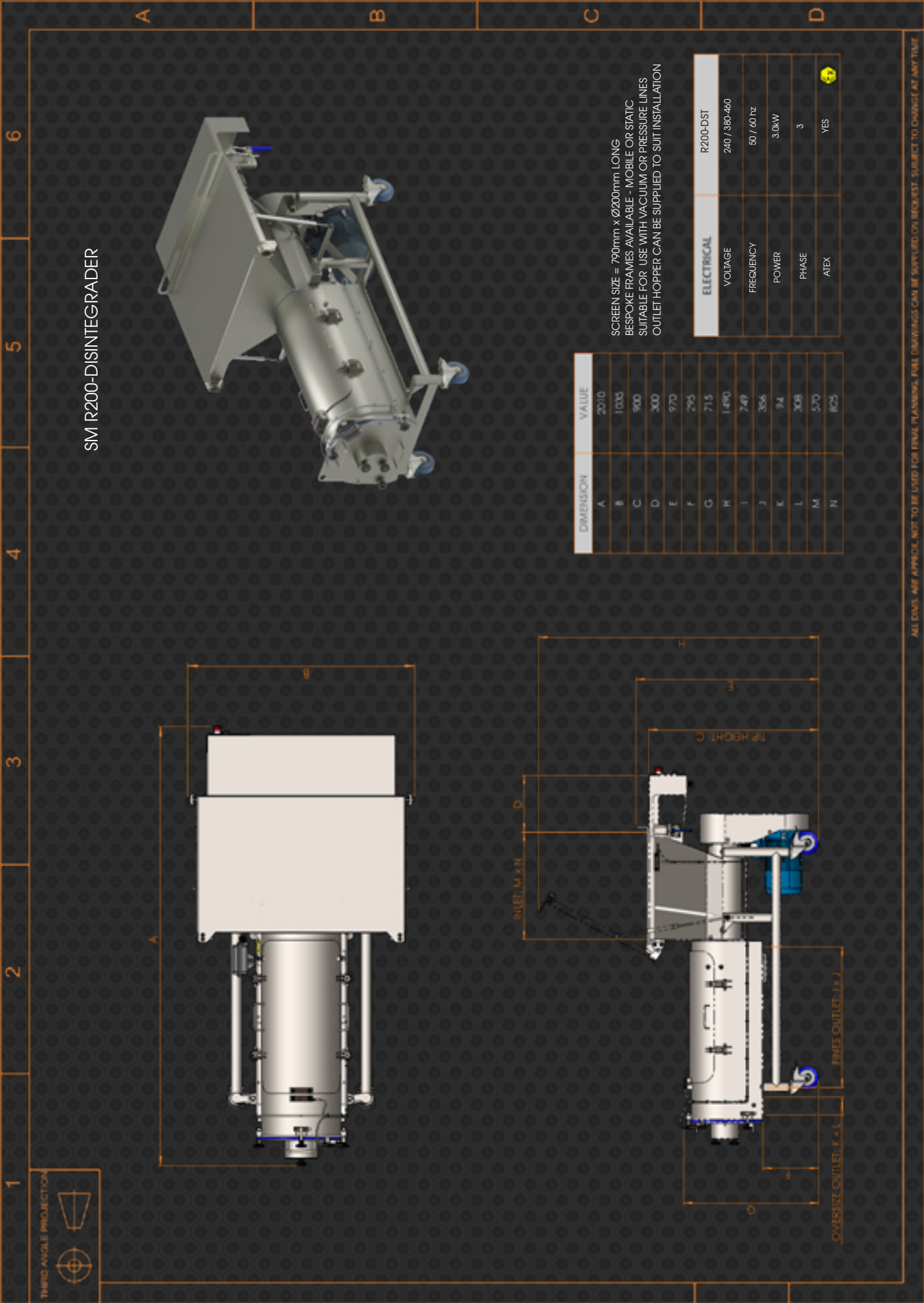
Finishes available

- Mirror polish to internal stainless parts (standard < 0.8Ra)
- Dressing of all internal/external welds - all stainless parts
- Pharmaceutical mirror polish <0.25Ra & dressing of all external welds
- Passivation after polish to all stainless parts
- Vivateq/Sublimation finish to all stainless parts
- Electropolish to all stainless parts

CERTIFIED TECHNOLOGY



*More options available on request



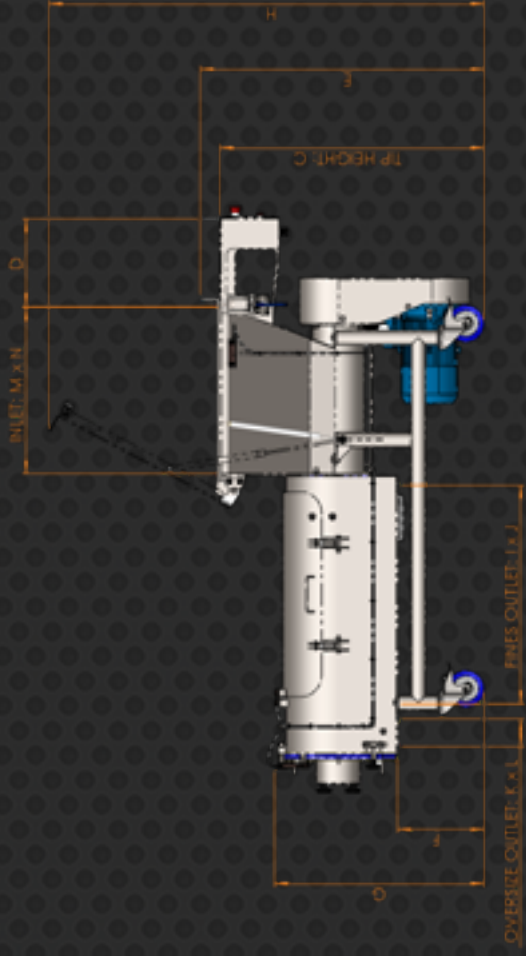
SM R200-DISINTEGRADER



DIMENSION	VALUE
A	2010
B	1005
C	900
D	300
E	970
F	295
G	715
H	1490
I	749
J	356
K	94
L	308
M	570
N	825

SCREEN SIZE = 790mm x Ø200mm LONG
 BESPOKE FRAMES AVAILABLE - MOBILE OR STATIC
 SUITABLE FOR USE WITH VACUUM OR PRESSURE LINES
 OUTLET HOPPER CAN BE SUPPLIED TO SUIT INSTALLATION

ELECTRICAL	R200-DST
VOLTAGE	240 / 380-460
FREQUENCY	60 / 60 hz
POWER	3.0kW
PHASE	3
ATEX	YES



ALL DIMS. ARE APPROX. NOT TO BE USED FOR FINAL PLANNING. FULL DRAWINGS CAN BE SUPPLIED ON REQUEST. SUBJECT TO CHANGE AT ANY TIME.