

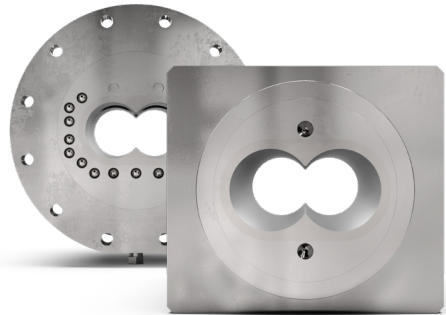
Spare parts with IQ
for twin-screw extruders.



~~~~~

# For secure market success with innovative products.

Welcome to Extruder Experts, one of the leading manufacturer of wear parts for co-rotating twin screw extruders. We have exactly what you need for your process:

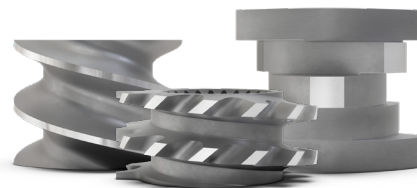


## Barrels

Whether simple nitrided steel cylinders or those with highly wear-resistant PM-HIP wear liners.

## Segments

Meticulously planned and equipped with the right steels for continuous use even with acid, heat and abrasive materials.



## Shafts

Made from specially heat-treated, high-alloy tool steel which can withstand any extreme conditions.



We take care.  
Service and  
expertise.

Don't miss out on the excellent expertise of our experts for over 90 machine types:

### – Maintenance & inspection

Early, proactive and state-of-the-art with our wear measurement system

### – Assembly & disassembly

Expert teamwork and record-breaking speed. Because time is money.

### – Repair & overhaul

We renew or replace bushings and solid barrels

### – Modernisation & optimisation

More power, less energy, more intensive cooling, better materials

### – Element removal service

Safe, fast and (mostly) non-destructive.